



EA extension | for the use with  
SAP® NetWeaver™



# Installation Guide

Versión 2.0

 | Xpress Learning

---

<b>1. INTRODUCTION.....</b>	<b>2</b>
<b>2. INSTALLATION.....</b>	<b>3</b>
<b>3. SETUP.....</b>	<b>7</b>
<b>4. UNINSTALL.....</b>	<b>10</b>

## 1. INTRODUCTION

---

The aim of this document is to explain in detail what should be the steps for installing the *EA Extension for SAP® Netweaver* software, to function properly.

Once the installation is completed, *EA Extension for SAP® Netweaver* will be available for users of Enterprise Architect.

## 2. INSTALLATION

---

### 1. Introduction

During the installation the following tasks will be done:

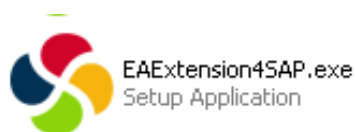
- “EA Extension for the use with SAP NetWeaver™” Add-In installation.
- “MDG Technology for SAP” deployment.

### 2. Hardware and Software requirements:

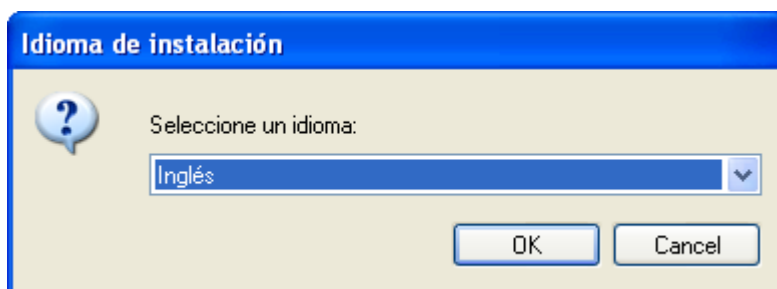
- Intel® Pentium III 450 Mhz class processor (or better).
- Microsoft® Windows Server 2003 (SP1); Windows Server 2008; Windows Vista (SP2); Windows XP; Windows 7.
- Microsoft .NET Framework 2.0
- RAM 96 MB (minimum); 256 MB (recommended)
- 5 MB Hard Disk space available.
- Enterprise Architect v7. 0 (or higher) installed

### 3. Installation steps:

1. Execute the program “EAExtension4SAP.exe”:



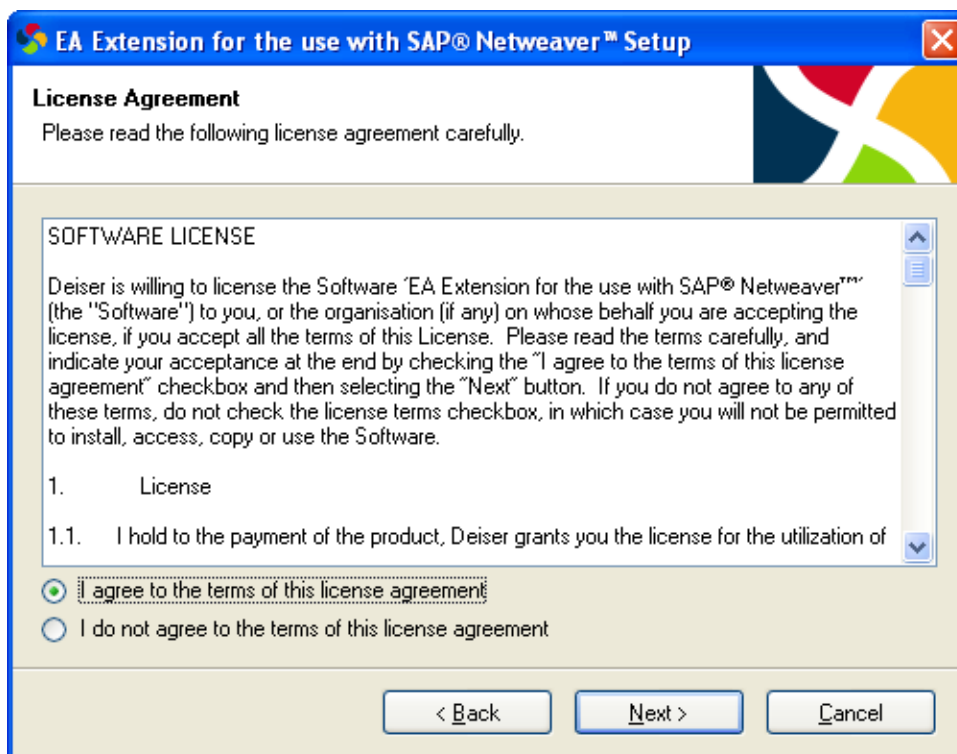
2. Select the language. This option applies to both, the installer program and the Add-In. However, the Add-In language can be changed later at any time:



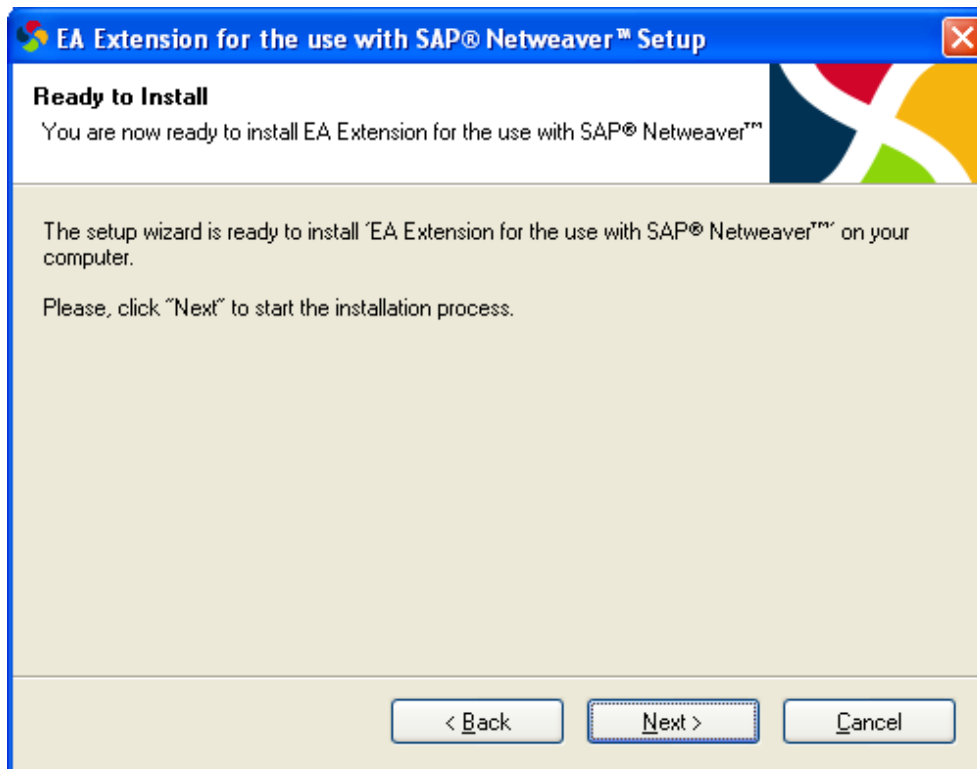
3. In the Welcome screen, click “Next”:



4. In the License Agreement screen, after carefully reading the license agreement, select “I accept the terms of the license agreement” if necessary and click “Next”:



5. In the Ready to Install screen, click “Next” to proceed to install the Add-In:

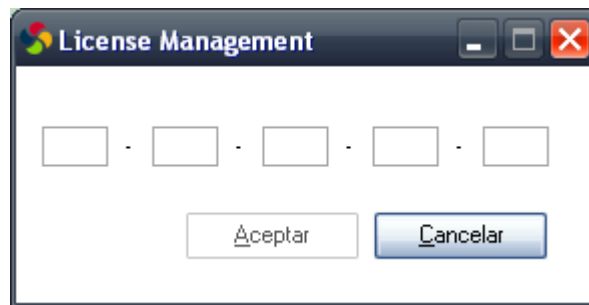


6. Once the installation is completed click “Finish”:



#### 4. Steps to activate the license:

1. In order to activate the license, the first step is to open the Add-In Menu | EA Extension for SAP | Add License Number
2. In the Activation screen insert the License Number and click “Enter”:



3. If the activation is successfully, the following message is displayed:



## 3. SETUP

---

### Introduction

Description of the tasks in order to setup the plug-in “EA Extension for the use with SAP® NetWeaver™”, for new Repositories as well as the whole of the Rules (restrictions) of the metamodel associates to the relationships among elements.

### New Repositories setup:

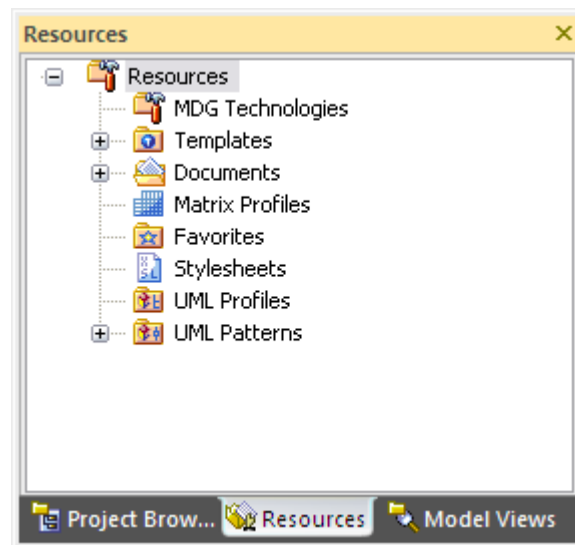
This task is needed only for new Repositories.

Despite the installer incorporates (in the client-side of Enterprise Architect) the MDG Technology needed for modelling in SAP environments (new diagram types, artifacts, templates, restrictions...) it doesn't include the whole of images, that are associate to some artifacts, automatically when it is created a new Enterprise Architect Repository (regardless of the format of the Repository: EAP file or database such as SQL Server, Oracle...)

That is the reason why it is important to execute the next tasks when new Repositories are created as well as in those Repositories in which the elements of EA Extension for the use with SAP® NetWeaver™ plug-in available to the designers are going to be used:

Execute Enterprise Architect and access to the Repository in which it is desired to incorporate the whole of images associate to SAP artifacts:

Go to “Resources” tab:

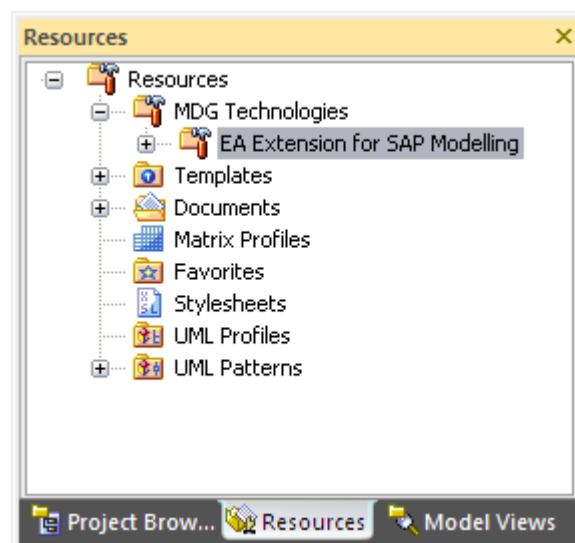


Right click on “MDG Technologies” and select “Import Technology” option:

Mediante el botón “...”, Navegar hasta la carpeta donde esté ubicada la Tecnología (por defecto, se puede encontrar en la carpeta de instalación del Add-In, normalmente “C:\Archivos de Programa\Sparx Systems\EA\EAExtension4SAP”) y seleccionar el archivo “Tecnología SAP Netweaver.xml”:

Select “...” button and browse to the folder where the MDG Technology is located (you can find by default the Technology in the Add-In installation folder, usually “C:\Program Files\Sparx Systems\EA\EAExtension4SAP”) and select the “MDG Technology for SAP.xml” file.

Press button “Import”. After the import process, the node should appear like this:



Once the import process has finished correctly, it is possible to delete the Technology doing right click, because the images have been already added to the Repository. If the Technology were not removed, it might come into conflict with another previous alternative deployment that could be in use

### **Modeling Rules (restrictions) setup:**

The plug-in uses a set of rules based on a metamodel.

This metamodel restricts the kind of relationships that can be established among some of the elements as well as the kind of elements that can be established among them.

The set of rules obtained from the metamodel is defined in a XML file located in the plug-in installation directory (**BIRestrictions.xml**). This file can be edited in the future for maintenance purposes of the whole rules.

If it is observed the format of that XML file, it is possible to delete, add and modify the existing rules.

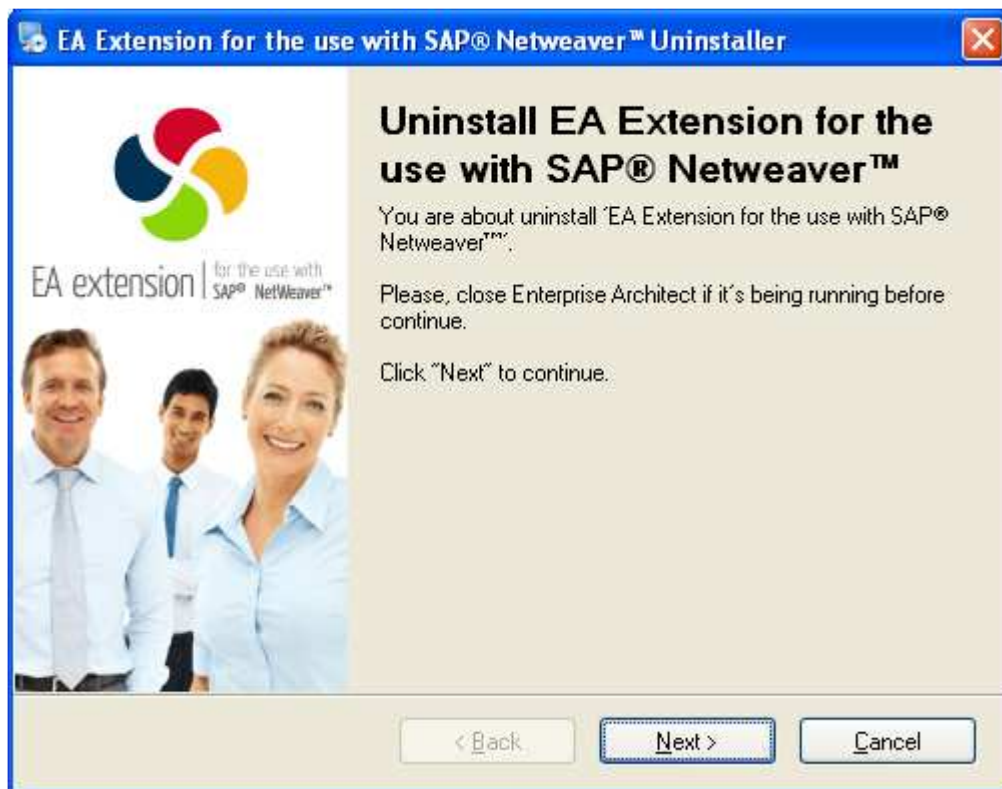
## 4. UNINSTALL

---

1. Go to “Start → All Programs” you may find an entry called “EA Extension for SAP” which contains a shortcut to the uninstall program:



2. When you run the uninstaller, the following screen is displayed, click “Next”:



3. Finally, in the “Uninstall Completed” screen, click “Finish”:



4. The EA module has been removed from the system.



**deiser** | Xpress Learning

C/ Valentín Beato, 22 - Planta baja derecha  
28037 MADRID

Tel.: 902 190 480

Fax: 911 531 576

[www.deiser.com](http://www.deiser.com)